



RamSoft
Gateway Router

Quick Start Guide

Gateway Router Quick Start Guide

Recommended System Requirements:

Hardware

Intel® Pentium® III or AMD® processor, 2 GHz or higher, 1 GB RAM (2 GB recommended)
500 MB swap space (2 GB recommended)
40 GB Hard Drive (80 GB recommended)
Graphics card supporting 800x600x16-bit color with 32 MB RAM
Microsoft® Windows®-compliant pointing device (optimized for Microsoft IntelliMouse®)

Software

Supported Operation Systems:

Microsoft Windows XP Professional (SP2) with latest updates
Microsoft Windows Vista Business or higher
Microsoft Windows 2003 Server SP1

Other Software:


Anti-virus software
Microsoft Defender

Gateway Router Quick Start Guide

Steps to a Quick Start:

Increase productivity and maximize your resources in your fast paced medical imaging facility. RamSoft Gateway Router offers the features required to meet the present and future demands of an increasingly demanding operating environment.

Installation

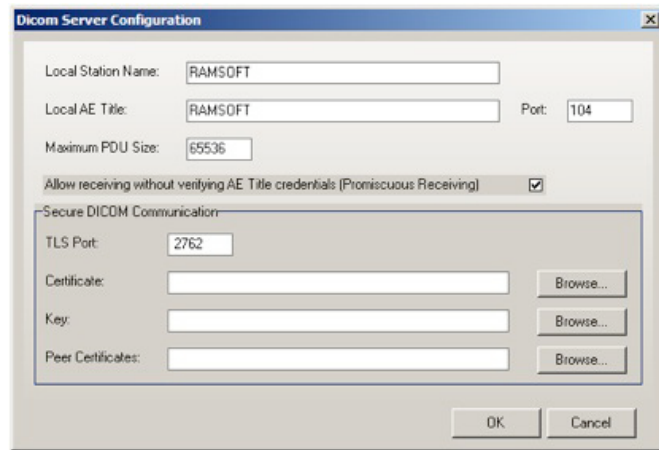
1. Double-click the **Gateway Router Installer** file ()
2. At the InstallShield Wizard welcome screen, click **Next**.
3. Click the radio button "**I accept the terms in the license agreement.**" Click **Next**.
4. Type in the User Name and Organization. Click **Next**.
5. For the Database, Image, and Destination folders, use the default folder and click **Next**.
6. Click **Install** to begin the installation.
7. When the InstallShield Wizard has completed, click **Finish**.
8. When prompted to restart, click **Yes**.
9. On Restart a pop-up with the options of Purchase, Activate, or Evaluate appears. **Click on the Evaluate option.**

Maintenance Configuration

1. Navigate to the Gateway Router 4 folder in the Start Menu.
2. Click on the Maintenance icon.




3. When prompted for the **Password**, type in "**prmaint**".
4. Go to **File -> Dicom -> Dicom Configuration**.
5. Type in the appropriate **Local Station Name** and **Local AE Title**. By default, Gateway Router is configured to accept DICOM connections from any station. If you do not want this functionality enabled, uncheck the **Allow receiving without verifying AE Title credentials (Promiscuous Receiving)** option. Click **OK** to commit changes and close the window.

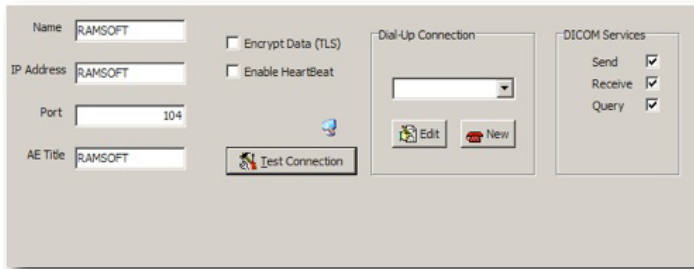


6. Go to **File -> Local Services -> Restart**.
7. After the services are restarted, click **OK**. **Close the Maintenance** window.

Gateway Router Quick Start Guide

Gateway Router Configuration

1. **Double-click** the **Gateway Router 4.6** shortcut on the desktop ()
2. A pop-up with the options of Purchase, Activate, or Evaluate appears. **Click on the Evaluate option.**
3. When prompted for the **User Name** and **Password**, type in **"ADMIN"** and **"ADMIN"** (case-sensitive).
4. Go to **Setting -> Password.**
5. Type in the **Old Password "ADMIN"** and type in the desired new password and confirmation. Click OK to commit changes.
6. Go to **Settings -> Server Settings -> Station List.**
7. In the **Station List** window, click **New Station.**
8. **Type** in the **Name, IP Address, Port, and AE Title** of the station you are connecting to receiving from. This will known as the **second station.**



9. Click **OK** to commit changes and click **OK** again to close the window.

Configure Other DICOM Station

1. Launch the other station.
2. Enter the **Name, IP Address, Port, and AE Title** of the **Gateway Router.**
3. Click the **Test Connection** button to ensure the DICOM connection succeeded. **Click OK** to close the pop-up and **click OK** to close the window.

Simple Routing Rule Trigger Setup & Example

1. Go to **Settings -> Server Settings -> Workflow.**
2. Go to the **Triggers** tab.
3. Under **Trigger Rules**, click **New.**
4. **Select** the appropriate **Status** (after COMPLETED), **Modality**, and **Body Part** from the drop-down lists. The % symbol represents all selections.
5. Type in the appropriate **Institution, Reading Physician, Referring Physician, and Origin AE Title.**
Click Save to commit changes.

Status	Modality	Body Part	Facility	Reading Physician	Referring Physician	Origin AE Title
VERIFIED	CR	CHEST	RAMSOFT	ANDERSON^MICHELLE^^DR.	IVANHOE^RAMONA^^DR.	QUADXP

6. Under Settings for the **selected trigger rule**, select **Routing.**
7. Under the **Destinations** tab, click **New.**
8. Under Type, select **Dicom Station.**
9. Under **Destination**, select **name** of the **second station.** Click **Save** to commit changes.

Type	Destination	Route Prior	Priority	Recipient
Dicom Station	QUADXP	N	HIGH	<NONE>

10. **Click OK** to close the window.
11. **Go to the second DICOM station.**
12. **Create or modify** a patient (Last name: **GATEWAY**, First name: **ROUTER**).

Gateway Router Quick Start Guide

13. Modify the **Institution Name, Reading Physician, and Referring Physician** to the ones in **step 5**.
14. Modify the study **Modality and Body Part** to the ones in **step 4**.
15. **Send the study** over to the **Gateway Router**.
16. **Go to the Gateway Router. Search for the patient study and open the Study Information form.** Verify that the study information is the same (the Status may be different).
17. **Change the Status** to the **Status set in step 4. Click OK** to commit changes and close the window.
18. Go to **Settings -> Logs -> Communication**. Under the Transmit Log tab, under Pending, verify that the study has been placed in the queue.
19. Once the **transmission has completed**, go to the **second station**. Search for the patient study and double-click to open the study. Verify that the patient and study information and the images are correct. Close the study.